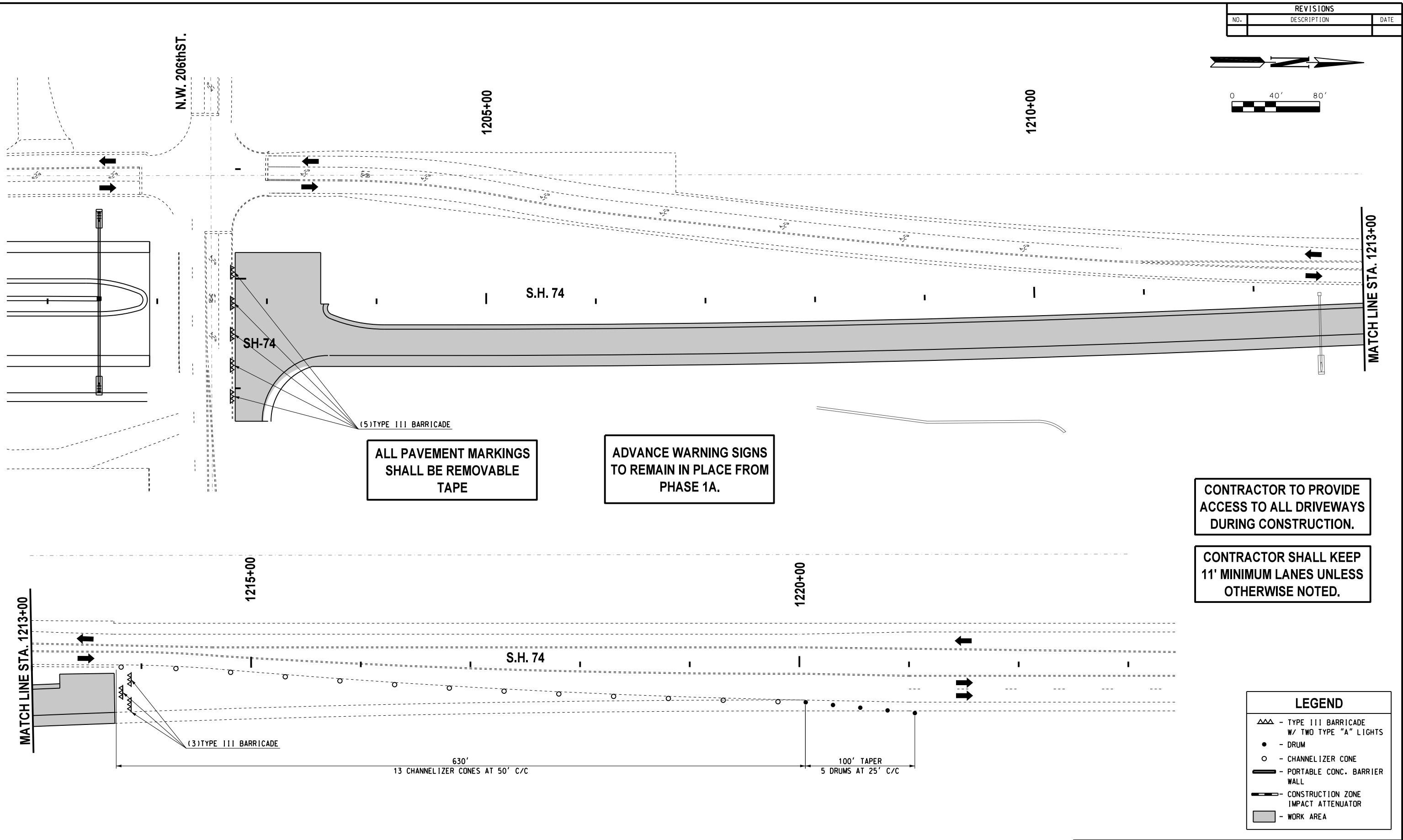
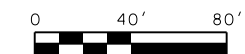


REVISIONS		
NO.	DESCRIPTION	DATE



ALL PAVEMENT MARKINGS SHALL BE REMOVABLE TAPE

ADVANCE WARNING SIGNS TO REMAIN IN PLACE FROM PHASE 1A.

CONTRACTOR TO PROVIDE ACCESS TO ALL DRIVEWAYS DURING CONSTRUCTION.

CONTRACTOR SHALL KEEP 11' MINIMUM LANES UNLESS OTHERWISE NOTED.

LEGEND	
	- TYPE III BARRICADE W/ TWO TYPE "A" LIGHTS
	- DRUM
	- CHANNELIZER CONE
	- PORTABLE CONC. BARRIER WALL
	- CONSTRUCTION ZONE IMPACT ATTENUATOR
	- WORK AREA

Design	GDB	08/10/17
Drawn	RWR	08/10/17



**TRAFFIC CONTROL
PHASE 1L
S.H. 74**

State Job No. 14964(08) Sheet No. T45

08/10/17 G:\Projects\T-1662B SH 74 @ NW 178th, NW 192nd & NW 206th\CAD\TC PHASE 1L_SH 74.dgn